



Opening the Physician/Supplier Procedure Summary Master (PSPS) Files

The Research Data Assistance Center (ResDAC) is a CMS contractor that provides free assistance to academic and non-profit researchers interested in using Medicare and/or Medicaid data for their research. ResDAC is staffed by a consortium of epidemiologists, public health specialists, health services researchers, biostatisticians, and health informatics specialists from the University of Minnesota.

There are 24 PSPS data files each year. Each file corresponds to a range of HCPCS codes. The HCPCS ranges are described on the CMS website at

http://www.cms.hhs.gov/NonIdentifiableDataFiles/06_PhysicianSupplierProcedureSummaryMasterFile.asp#TopOfPage

The files can be opened in Access or read into SAS, SPSS, or another database language. The files are too large to open in Excel 2003. At least some of the tables are too large to open in one worksheet in Excel 2007 as well.

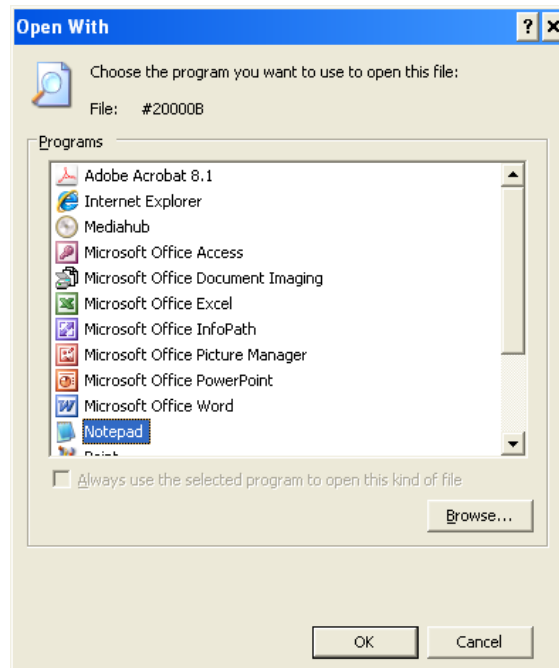
TN-012
June 2009
Author: Debra Caldwell
Updated December 2011

Getting Started

Unzip one of the 24 data files. Example: \PSPS\2007\#20000b.zip.

The pkreader unzip program is included. You may need to install it if you don't already have it.

Open the unzipped file with a program such as Notepad. Select Notepad and click OK.



Save the opened file as a text file.

File

Save As

Under "Save as Type", select "Text Documents".

Opening a PSPS File Using Access

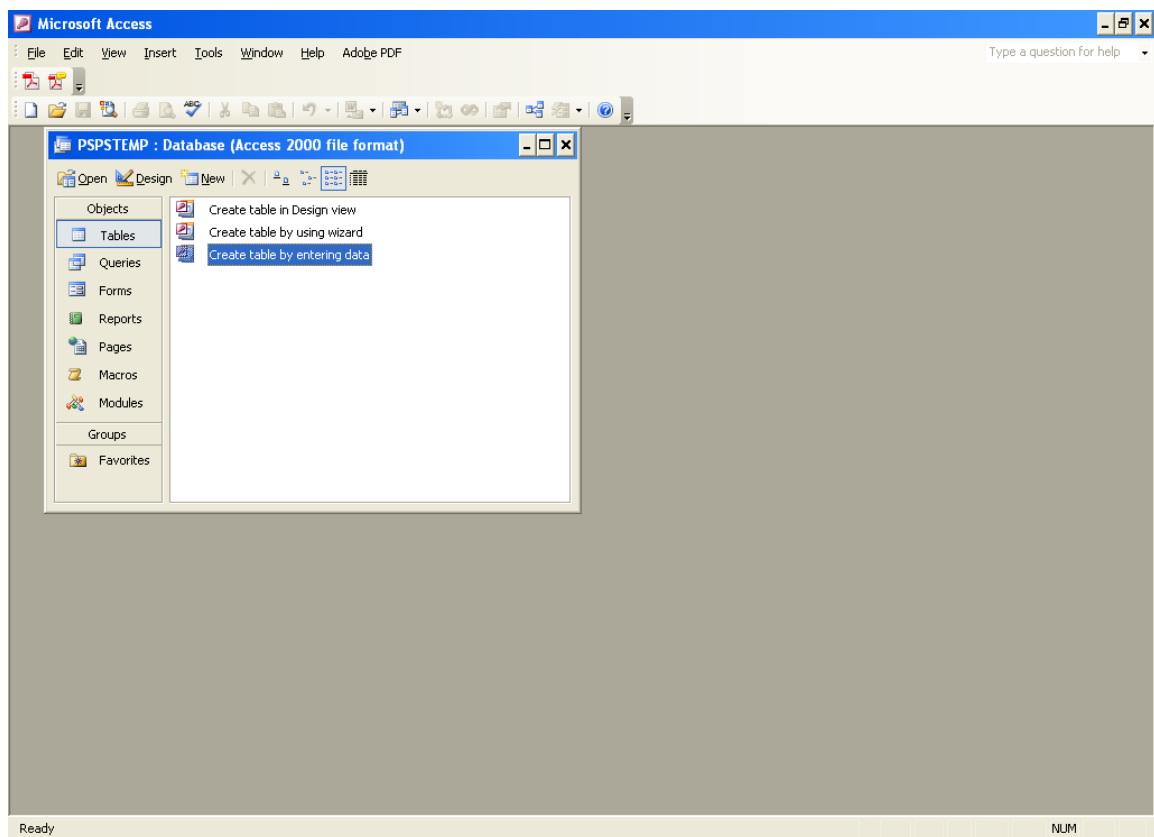
Open Access

Select File

New for a new blank Access database

"Create" (save) the new database.

Under "Objects", select "Tables".



From the toolbar at the top of the database, select

File

Get External Data.

At this point, you can choose either to "Import" or "Link Tables".

*Linked Tables will take less space. It's possible that if all 24 tables are Imported, they will not fit in one Access database. However, Linked Tables will not be indexed and may take a little longer to process. **Important:** If using Linked Tables, Access will*

always look for the source table in the path you designate on creation, so it is important not to move the source text tables.

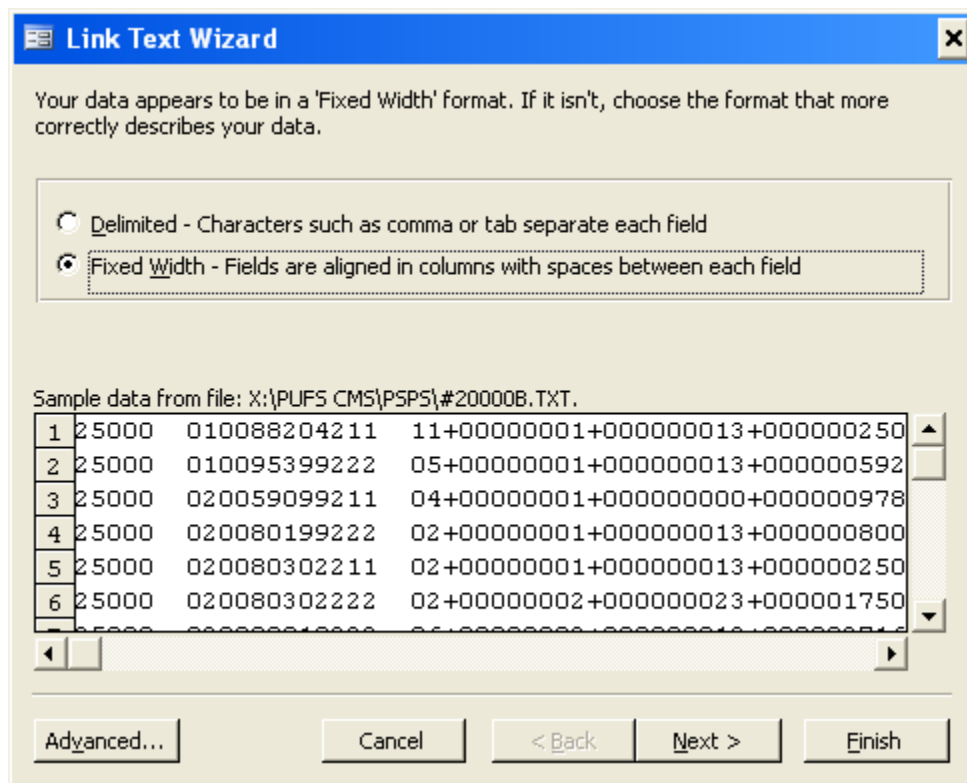
Choose either "Import" or "Link Tables".

Browse and select the text file you just saved.

You may need to select "Text Files" from the "Files of Type" drop down list at the bottom of the browse window in order to see the saved text file.

Click "Link" or "Import".

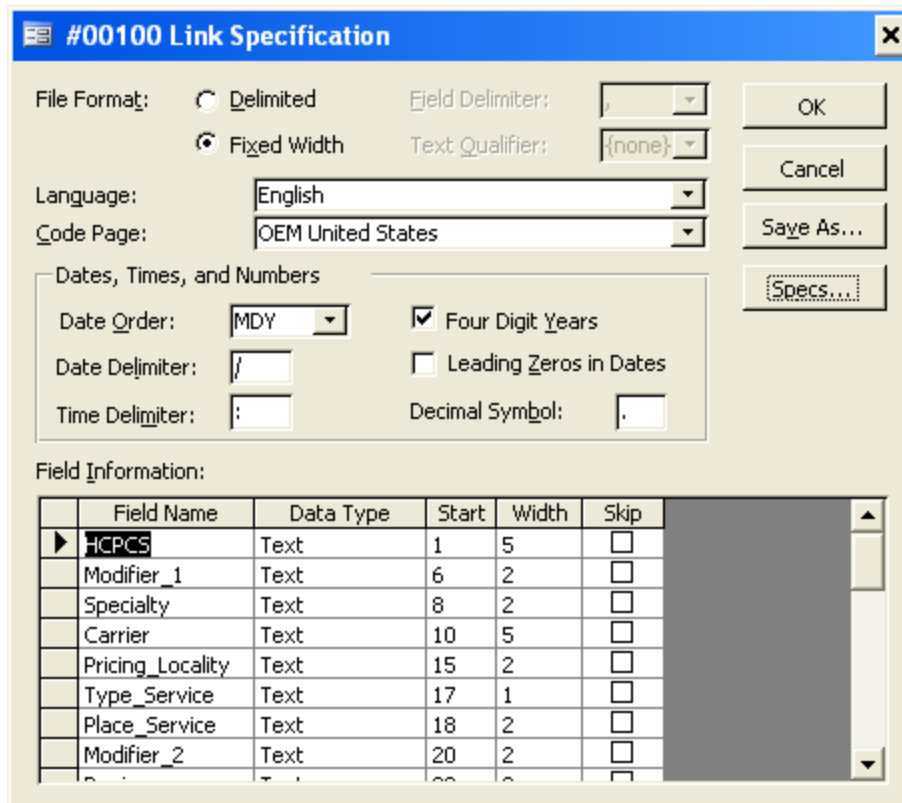
Either the Link or Import Text Wizard will appear.



Choose "Fixed Width"

Then Choose "Advanced".

A specification window will appear.



Under "Field Name", enter the variable name.

Using the record layout supplied with the PSPS file, choose the "Data Type", "Start" position, and "Width" for all of the variables. Under "Data Type", "text" can be chosen for character variables and "Long Integer" can be chosen for the numeric fields. Payment and Charges amounts in this database are to the nearest dollar, so "Long Integer" is a workable option for these fields.

The Specification you type in can be saved by clicking on the "Save As" button in this window. For subsequent tables, this specification can be retrieved and applied by clicking on the "Specs" button in this window.

Alternatively, you can continue with the Wizard and click to enter breaks between variables and later set the type of variable.

Finish the Wizard to have either a Linked or Imported table.

IMPORTANT: This Access screenshot reflects reading in the 2007 PSPS file. The layout of the PSPS file changed beginning with the 2009 file and several fields were removed. These fields include the Region, Total Services Count, Miles/Times/Units (MTUS) fields. When opening the 2009 and later PSPS files with Access, users will need to refer to the record layout that they received with the data.

Opening a PSPS File Using SAS

The following is a sample SAS program for reading in a PSPS file.

IMPORTANT: This SAS program can be used for reading in the 2008 and earlier PSPS data. The layout of the PSPS file changed beginning with the 2009 file and several fields were removed. These fields include the Region, Total Services Count, Miles/Times/Units (MTUS) fields. When opening the 2009 and later PSPS files with SAS, users will need to modify the SAS input statement based on the record layout that they received with the data.

```
libname PSPS1 'X:\PUFs CMS\PSPS';  
filename PSP00100 'X:\PUFs CMS\PSPS\#00100.txt';
```

```
Data PSPS1.PSPS00100;  
  Infile PSP00100;  
  Input  
    @1 HCPCS                $5.  
    @6 Modifier1            $2.  
    @8 Specialty            $2.  
    @10 Carrier             $5.  
    @15 Locality            $2.  
    @17 Type_Service        $1.  
    @18 Place_Service       $2.  
    @20 Modifier2           $2.  
    @22 Region              $2.  
    @24 Tot_Serv_Cnt        9.  
    @33 MTUS                9.  
    @42 MTUS_Ind            $1.  
    @43 Submitted_Chrg      dollar10.0  
    @53 Allowed_Chrg        dollar10.0  
    @63 Denied_Srv_Cnt      8.  
    @71 Denied_Amt          dollar8.0  
    @79 Assigned_Srv_Cnt    9.  
    @88 Payment_Amt         dollar10.0  
    @98 ASC_Paym_Grp        $1.  
    @99 Error_Ind           $1.  
    @100 Filler             $6.;
```

```
Proc Print data=PSPS1.PSPS00100 (obs=200);  
  Title '2007 PSPS 00100';  
run;
```

If you have any questions or comments, ResDAC staff can be contacted at 1-888-ResDAC or resdac@umn.edu

Internet Citation:

Opening the Physician Supplier Procedure Summary File. Technical Brief, ResDAC Publication Number 12, June 2009. Updated December 12, 2011. Research Data Assistance Center, University of Minnesota, Minneapolis, MN. <http://www.resdac.umn.edu>.

Technical Document authored by Debra Caldwell, ResDAC staff.

Copyright © 2009 Regents of the University of Minnesota. All Rights Reserved.

The analyses upon which this publication is based were performed under Contract Number HHSM-500-2005-000271, entitled, "Research Data Assistance Center (ResDAC)", sponsored by CMS, Department of Health & Human Services.